

# Rampion 2 Wind Farm

## Category 6: Environmental Statement

### Volume 3, Chapter 25: Historic environment – Figures (Part 3 of 5)

**Date: August 2023**

**Revision A**

Document Reference: 6.3.25

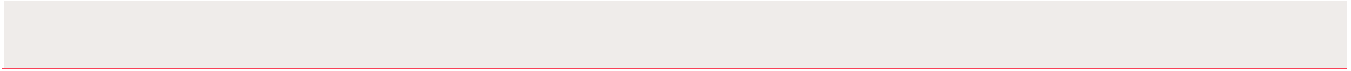
Pursuant to: APFP Regulations 5 (2) (a), 5 (2) (m)

Ecodoc number: 004884771-01



## Document revisions

Revision	Date	Status/reason for issue	Author	Checked by	Approved by
A	04/08/2023	Final for DCO Application	WSP	RED	RED



# Contents

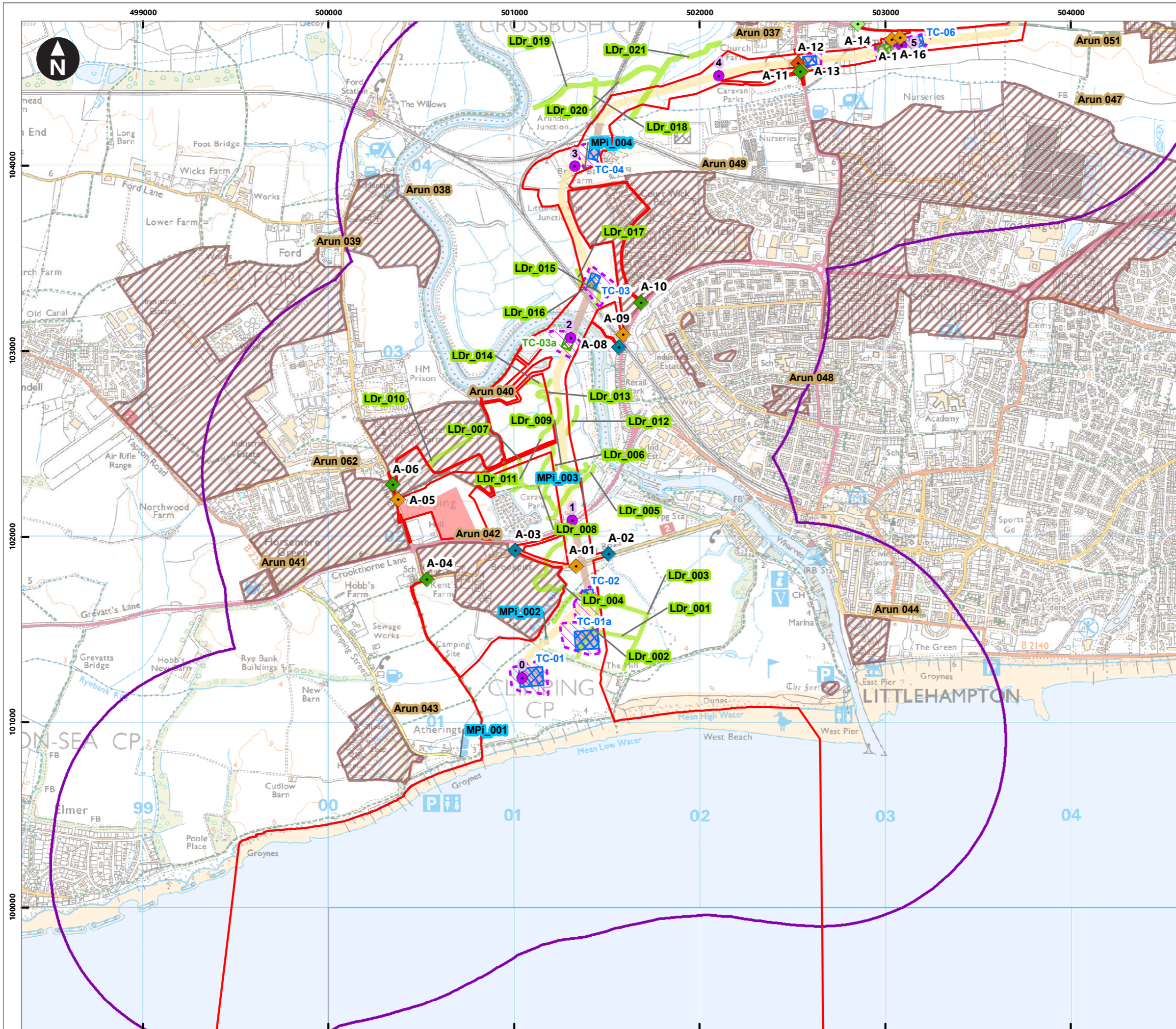
---

## List of Figures

Figure number	Figure Title	APFP number	Ecodoc number	Revision	Revision Date	Document Part
Figure 25.1	ES Assessment Boundary	5 (2) (a)	004866435-01	A	04/08/2023	Part 1 of 5
Figure 25.2a-h	Designated heritage assets within Study Area	5 (2) (m)	004866436-01	A	04/08/2023	Part 1 of 5
Figure 25.3a-x	HER monument records and UKHO wreck sites	5 (2) (m)	004866437-01	A	04/08/2023	Part 2 of 5
Figure 25.4a-h	Archaeological Notification Areas and features identified by remote sensing (LiDAR and aerial photographs) and historic maps	5 (2) (m)	004866438-01	A	04/08/2023	Part 3 of 5
Figure 25.5a-h	Designated heritage assets assessed for effects through change to setting from onshore development	5 (2) (m)	004866439-01	A	04/08/2023	Part 3 of 5
Figure 25.6a-h	Designated heritage assets with onshore cable corridor and ZTV	5 (2) (a)	004866440-01	A	04/08/2023	Part 4 of 5

---

<b>Figure number</b>	<b>Figure Title</b>	<b>APFP number</b>	<b>Ecodoc number</b>	<b>Revision</b>	<b>Revision Date</b>	<b>Document Part</b>
Figure 25.7a-c	Designated heritage assets with onshore substation and ZTV	5 (2) (a)	004891443-01	A	04/08/2023	Part 4 of 5
Figure 25.8a-c	Designated heritage assets with Bolney substation extension and ZTV	5 (2) (a)	004891444-01	A	04/08/2023	Part 4 of 5
Figure 25.9a-g	Designated heritage assets assessed for effects through change to setting from offshore development	5 (2) (a)	004891445-01	A	04/08/2023	Part 5 of 5
Figure 25.10a-g	Designated heritage assets assessed for effects through change to setting from offshore development and ZTV	5 (2) (a)	004891446-01	A	04/08/2023	Part 5 of 5
Figure 25.11	Historic environment Zone of Influence	5 (2) (a)	004891447-01	A	04/08/2023	Part 5 of 5



Service Layer Credits: Contains OS data © Crown Copyright and database right 2023  
 © Crown copyright and database rights 2023 Ordnance Survey 0100031673

**Key**

- Proposed DCO Order Limits
- 1km study area
- Trenchless Crossing (TC) compounds
- Trenchless Crossing (TC) compound alternatives
- Trenchless Crossing (TC) limits of deviation
- Temporary construction compound

**Proposed onshore cable construction corridor**

- Indicative trenchless section
- Indicative open cut section

**Onshore cable route KM points**

- Onshore cable route

**Access from public highway**

- Construction
- Construction & operational
- Light construction
- Light construction & operational
- Operational

**Other features**

- Archaeological Notification Areas
- Historic map feature
- LiDAR feature

**Scale and Orientation**

0 0.1 0.2 0.4 0.6 0.8 Kilometres  
 1:20,000  
 British National Grid Transverse Mercator

Rampion Extension Development

**Rampion 2 WIND FARM**

Rampion 2 Offshore Wind Farm

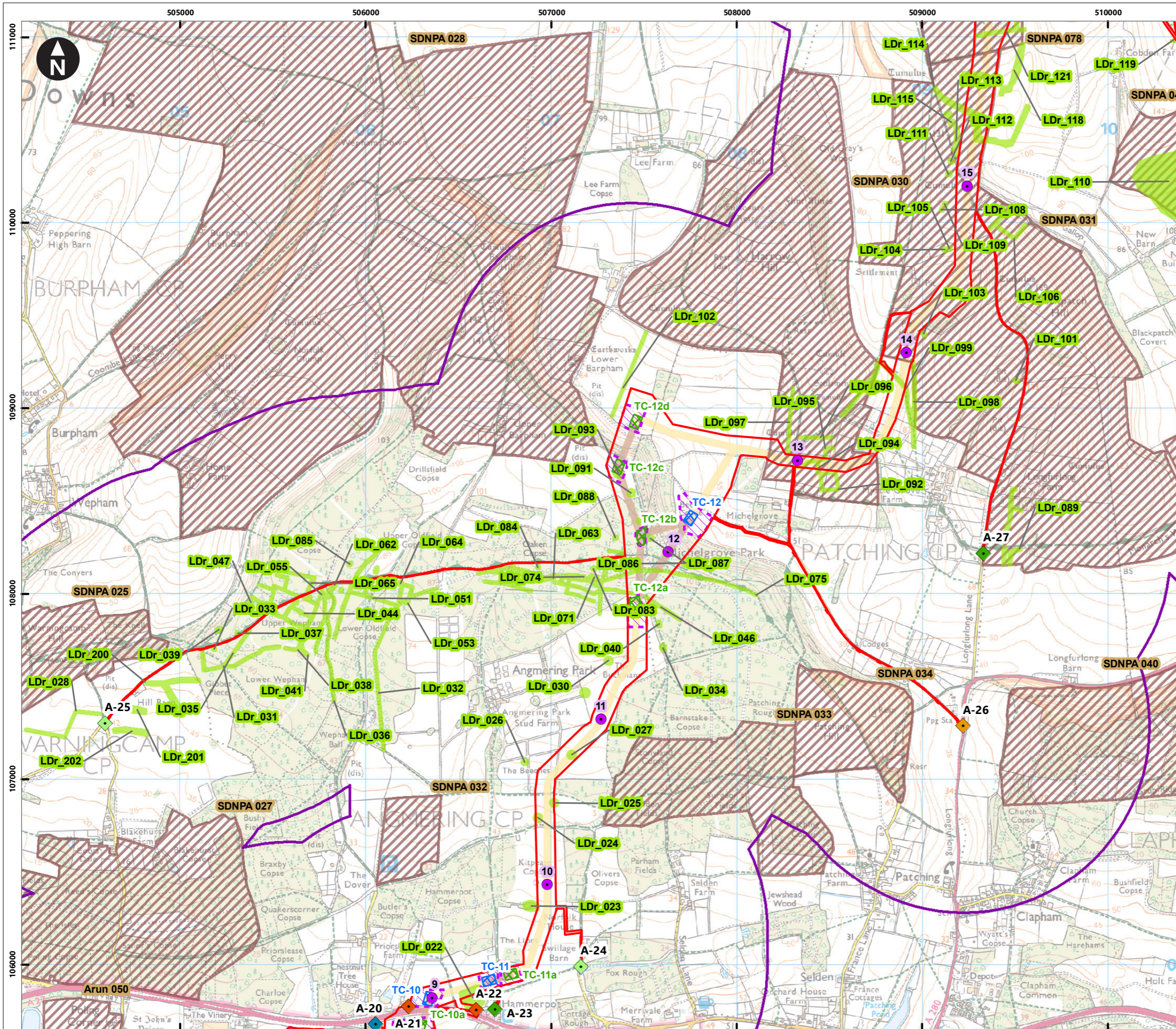
Figure 25.4a Archaeological Notification Areas and features identified by remote sensing (LiDAR and aerial photographs) and historic maps

Environmental Statement

System Identifier: 42285-WSPE-ES-ON-FG-OH-3329 Version: 1.0

Company: WSP	Drawn By: SHEPS	Chk/Aprvd: SUTET	Drawn Date: 01/08/2023	Status: Final
--------------	-----------------	------------------	------------------------	---------------





Service Layer Credits: Contains OS data © Crown Copyright and database right 2023  
 © Crown copyright and database rights 2023 Ordnance Survey 0100031673

**Key**

- Proposed DCO Order Limits
- 1km study area
- Trenchless Crossing (TC) compounds
- Trenchless Crossing (TC) compound alternatives
- Trenchless Crossing (TC) limits of deviation

**Proposed onshore cable construction corridor**

- Indicative trenchless section
- Indicative open cut section

**Onshore cable route KM points**

- Onshore cable route

**Access from public highway**

- Construction
- Construction & operational
- Light construction
- Light construction & operational
- Operational

Archaeological Notification Areas

LiDAR feature

0 0.1 0.2 0.4 0.6 0.8  
 Kilometres  
 1:20,000  
 British National Grid Transverse Mercator

Rampion Extension Development

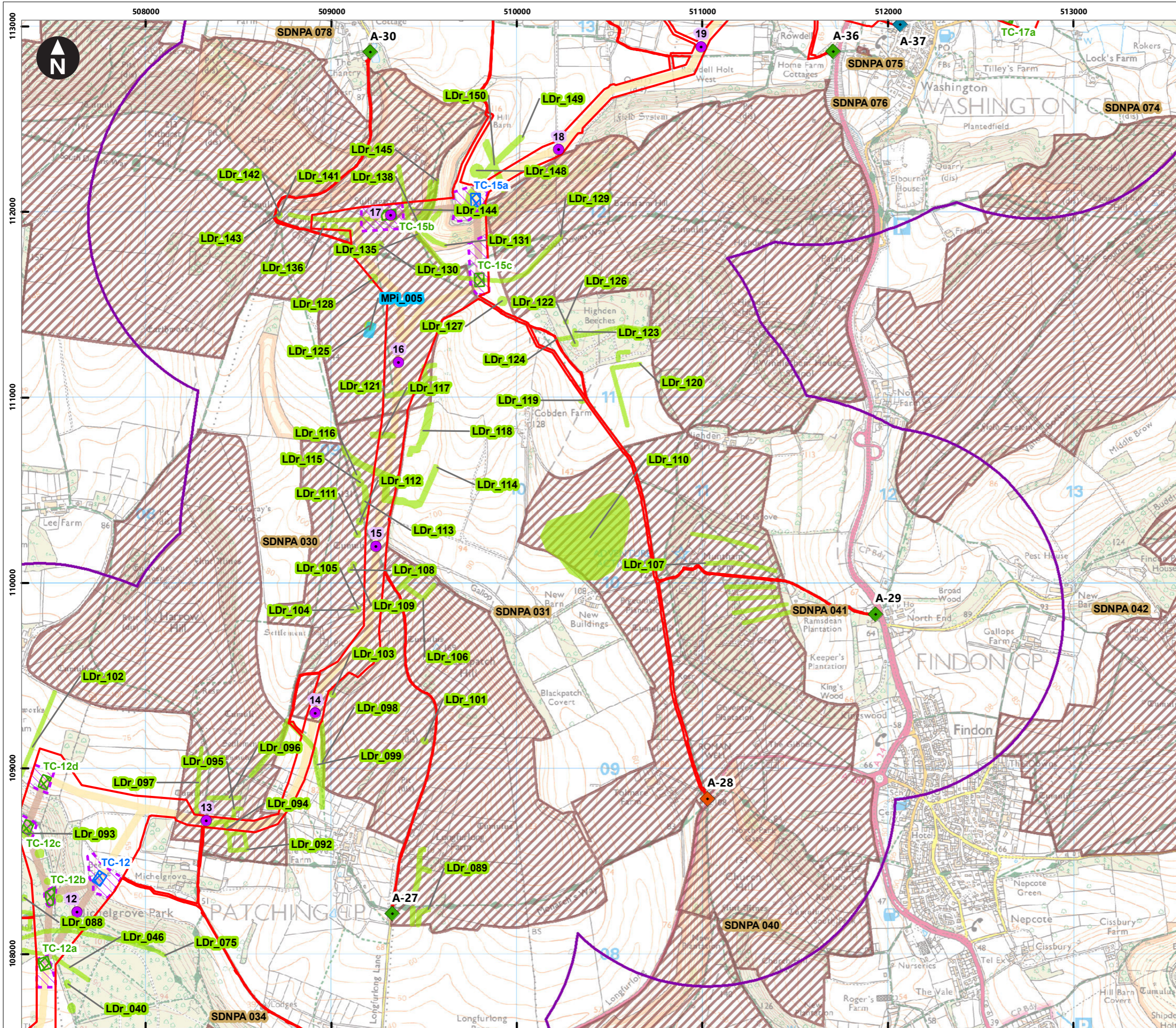
Rampion 2 Offshore Wind Farm

Figure 25.4c Archaeological Notification Areas and features identified by remote sensing (LiDAR and aerial photographs) and historic maps

Environmental Statement

System Identifier: 42285-WSP-ES-ON-FG-OH-3329      Version: 1.0

Company: WSP	Drawn By: SHEPS	Chk/Prvrd: SUTET	Drawn Date: 01/08/2023	Status: Final
--------------	-----------------	------------------	------------------------	---------------



Service Layer Credits: Contains OS data © Crown Copyright and database right 2023  
 © Crown copyright and database rights 2023 Ordnance Survey 0100031673

**Key**

- Proposed DCO Order Limits
- 1km study area
- Trenchless Crossing (TC) compounds
- Trenchless Crossing (TC) compound alternatives
- Trenchless Crossing (TC) limits of deviation

**Proposed onshore cable construction corridor**

- Indicative trenchless section
- Indicative open cut section

**Onshore cable route KM points**

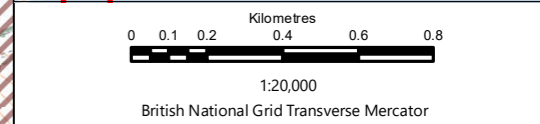
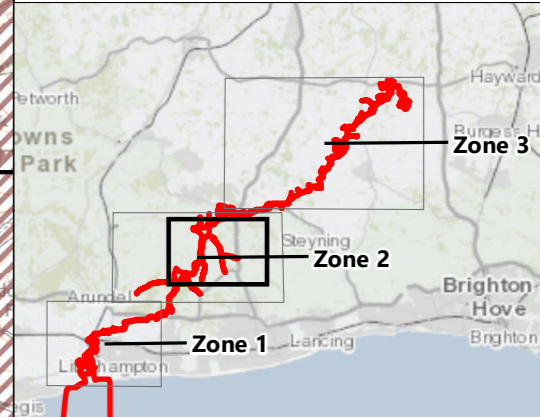
- Onshore cable route

**Access from public highway**

- ◆ Construction
- ◆ Construction & operational
- ◆ Light construction
- ◆ Operational

**Other features:**

- Archaeological Notification Areas
- Historic map feature
- LiDAR feature



Rampion Extension Development

Rampion 2 Offshore Wind Farm

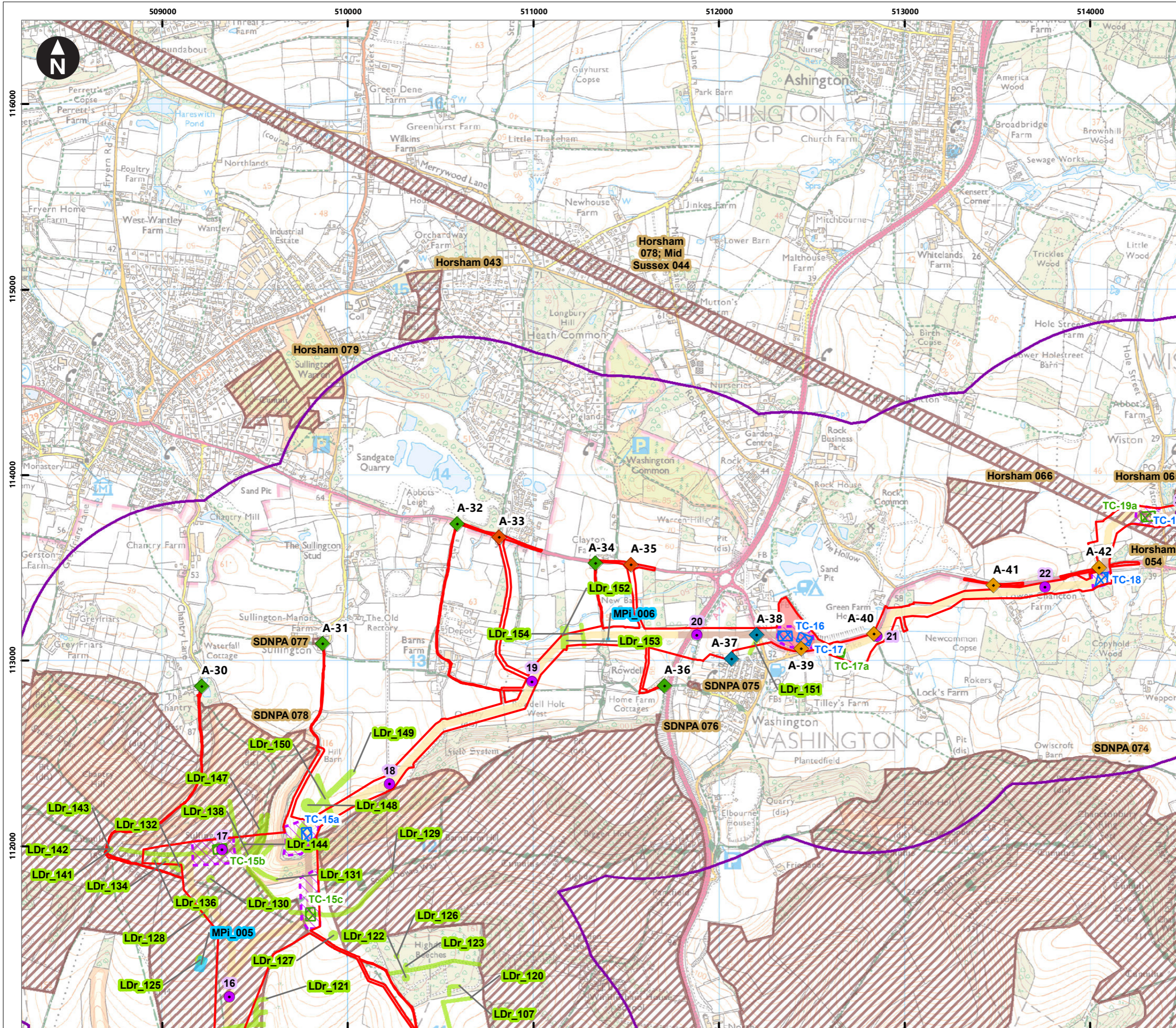
Figure 25.4d Archaeological Notification Areas and features identified by remote sensing (LiDAR and aerial photographs) and historic maps

Environmental Statement

System Identifier: 42285-WSP-ES-ON-FG-OH-3329      Version: 1.0

Company: WSP	Drawn By: SHEPS	Chk/Prvrd: SUTET	Drawn Date: 01/08/2023	Status: Final
--------------	-----------------	------------------	------------------------	---------------





Service Layer Credits: Contains OS data © Crown Copyright and database right 2023  
 © Crown copyright and database rights 2023 Ordnance Survey 0100031673

**Key**

- Proposed DCO Order Limits
- 1km study area
- Trenchless Crossing (TC) compounds
- Trenchless Crossing (TC) compound alternatives
- Trenchless Crossing (TC) limits of deviation
- Temporary construction compound

**Proposed onshore cable construction corridor**

- Indicative trenchless section
- Indicative open cut section

**Onshore cable route KM points**

- Onshore cable route

**Access from public highway**

- Construction
- Construction & operational
- Light construction
- Operational

**Other features:**

- Archaeological Notification Areas
- Historic map feature
- LIDAR feature

**Inset Map:** Shows the project location relative to Brighton and Hove, with three zones (Zone 1, Zone 2, Zone 3) highlighted in red.

**Scale:** 0 0.1 0.2 0.4 0.6 0.8 Kilometres  
 1:20,000  
 British National Grid Transverse Mercator

Rampion Extension Development

**Rampion 2 WIND FARM**

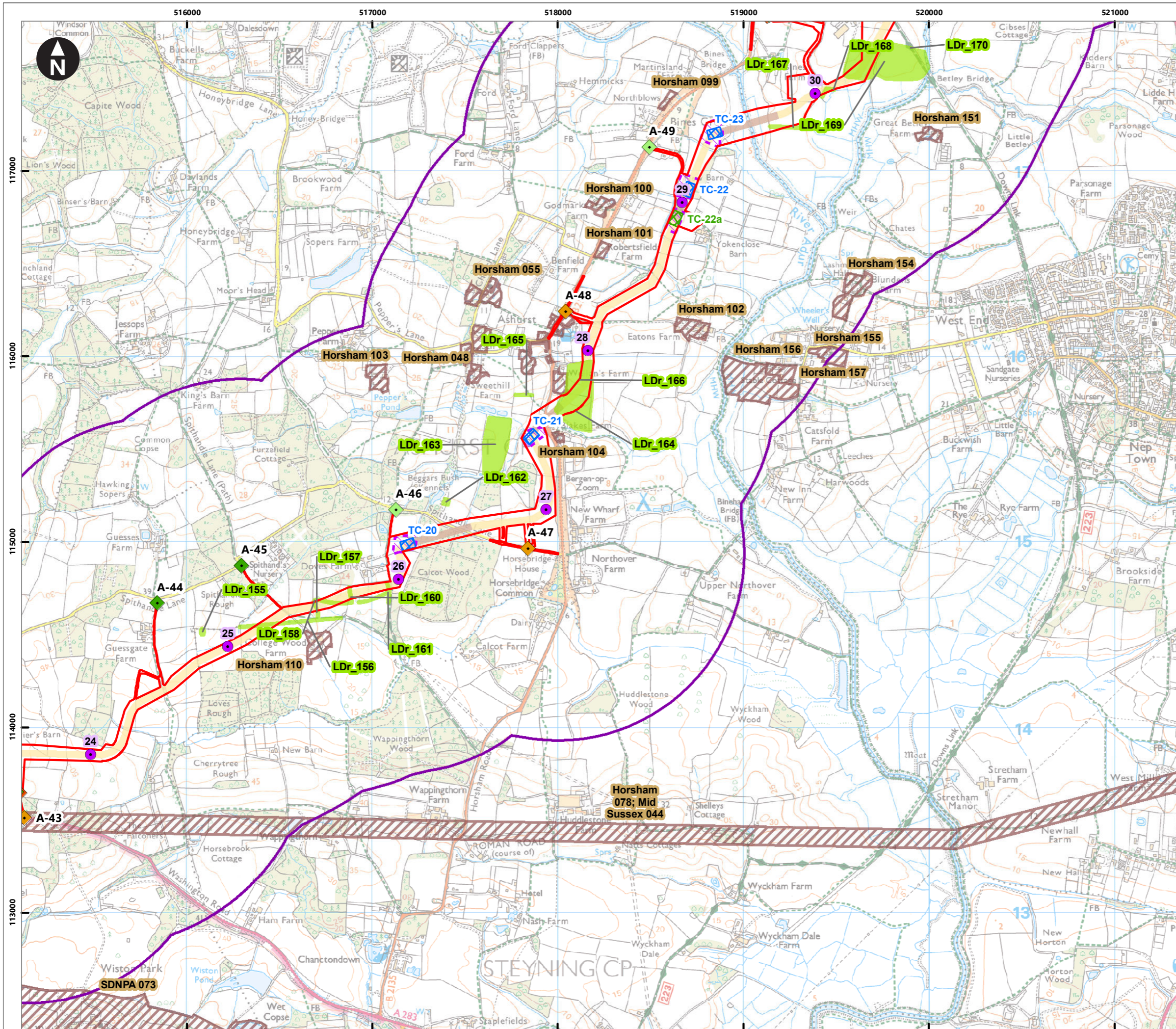
Rampion 2 Offshore Wind Farm

Figure 25.4e Archaeological Notification Areas and features identified by remote sensing (LiDAR and aerial photographs) and historic maps

Environmental Statement

System Identifier: 42285-WSP-ES-ON-FG-OH-3329      Version: 1.0

Company: WSP	Drawn By: SHEPS	Chk/Prvrd: SUTET	Drawn Date: 01/08/2023	Status: Final
--------------	-----------------	------------------	------------------------	---------------



Service Layer Credits: Contains OS data © Crown Copyright and database right 2023  
 © Crown copyright and database rights 2023 Ordnance Survey 0100031673

**Key**

- Proposed DCO Order Limits
- 1km study area
- Trenchless Crossing (TC) compounds
- Trenchless Crossing (TC) compound alternatives
- Trenchless Crossing (TC) limits of deviation

**Proposed onshore cable construction corridor**

- Indicative trenchless section
- Indicative open cut section

**Onshore cable route KM points**

- Onshore cable route

**Access from public highway**

- Construction
- Construction & operational
- Light construction & operational
- Operational

**Archaeological Notification Areas**

- LIDAR feature

Rampion Extension Development

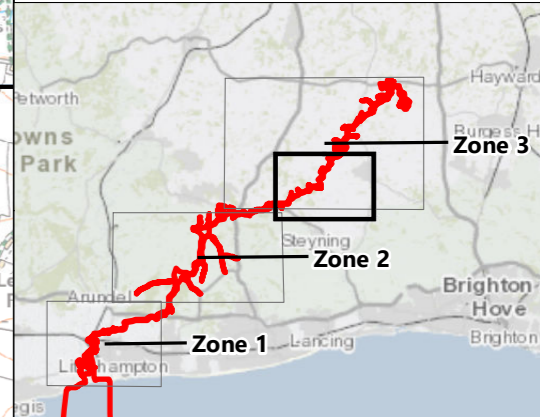
Rampion 2 Offshore Wind Farm

Figure 25.4f Archaeological Notification Areas and features identified by remote sensing (LiDAR and aerial photographs) and historic maps

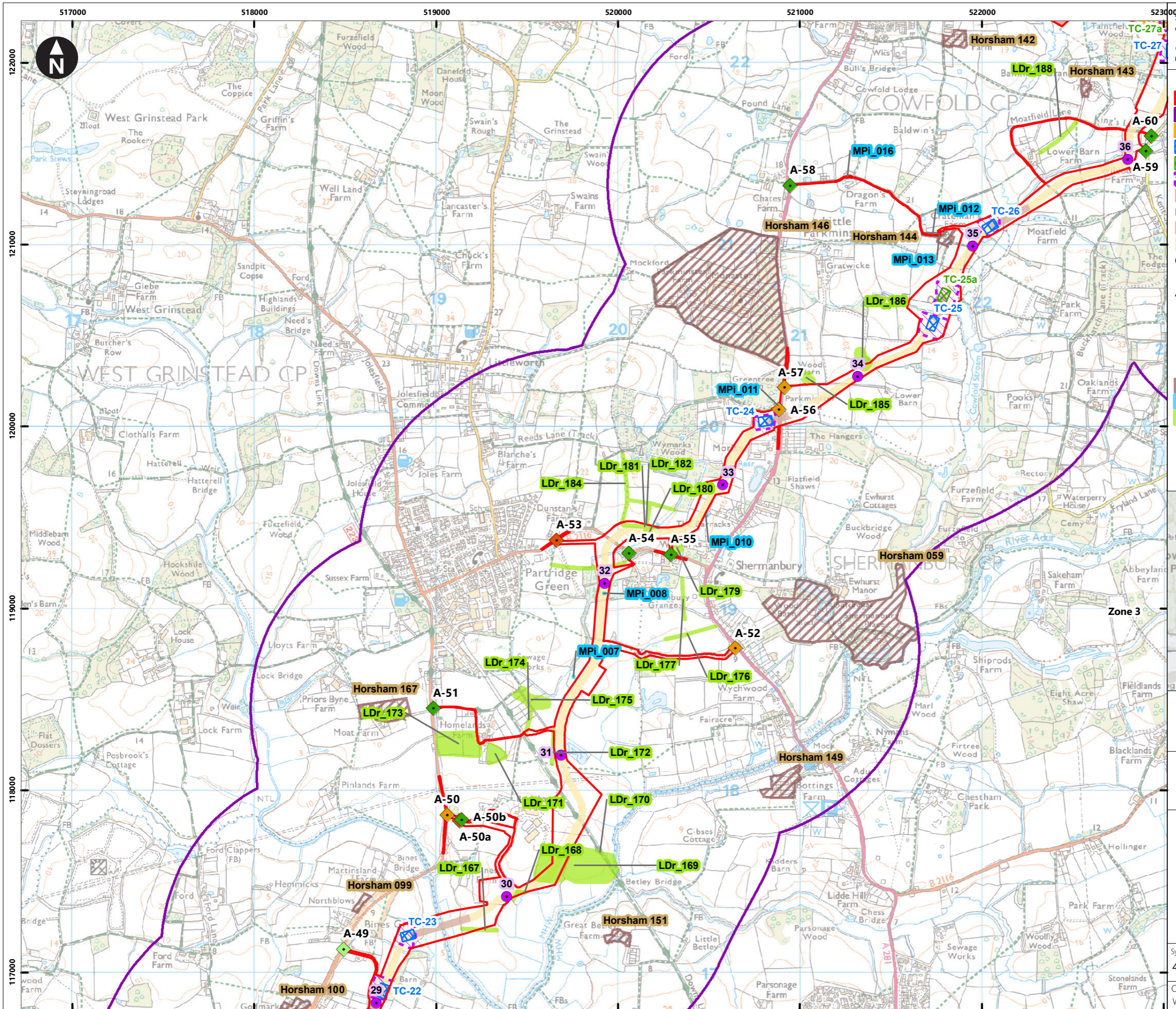
Environmental Statement

System Identifier: 42285-WSP-ES-ON-FG-OH-3329      Version: 1.0

Company: WSP	Drawn By: SHEPS	Chk/Prvrd: SUTET	Drawn Date: 01/08/2023	Status: Final
--------------	-----------------	------------------	------------------------	---------------



0 0.1 0.2 0.4 0.6 0.8  
 Kilometres  
 1:20,000  
 British National Grid Transverse Mercator



Service Layer Credits: Contains OS data © Crown Copyright and database right 2023  
 © Crown copyright and database rights 2023 Ordnance Survey 0100031673

**Key**

- Proposed DCO Order Limits
- 1km study area
- Oakdene substation site
- Trenchless Crossing (TC) compounds
- Trenchless Crossing (TC) compound alternatives
- Trenchless Crossing (TC) limits of deviation
- Temporary construction compound

**Proposed onshore cable construction corridor**

- Indicative trenchless section
- Indicative open cut section

**Onshore cable route KM points**

- Onshore cable route

**Access from public highway**

- Construction
- Construction & operational
- Light construction & operational
- Operational

**Other features**

- Archaeological Notification Areas
- Historic map feature
- LiDAR feature

0 0.1 0.2 0.4 0.6 0.8  
Kilometres  
1:20,000  
British National Grid Transverse Mercator

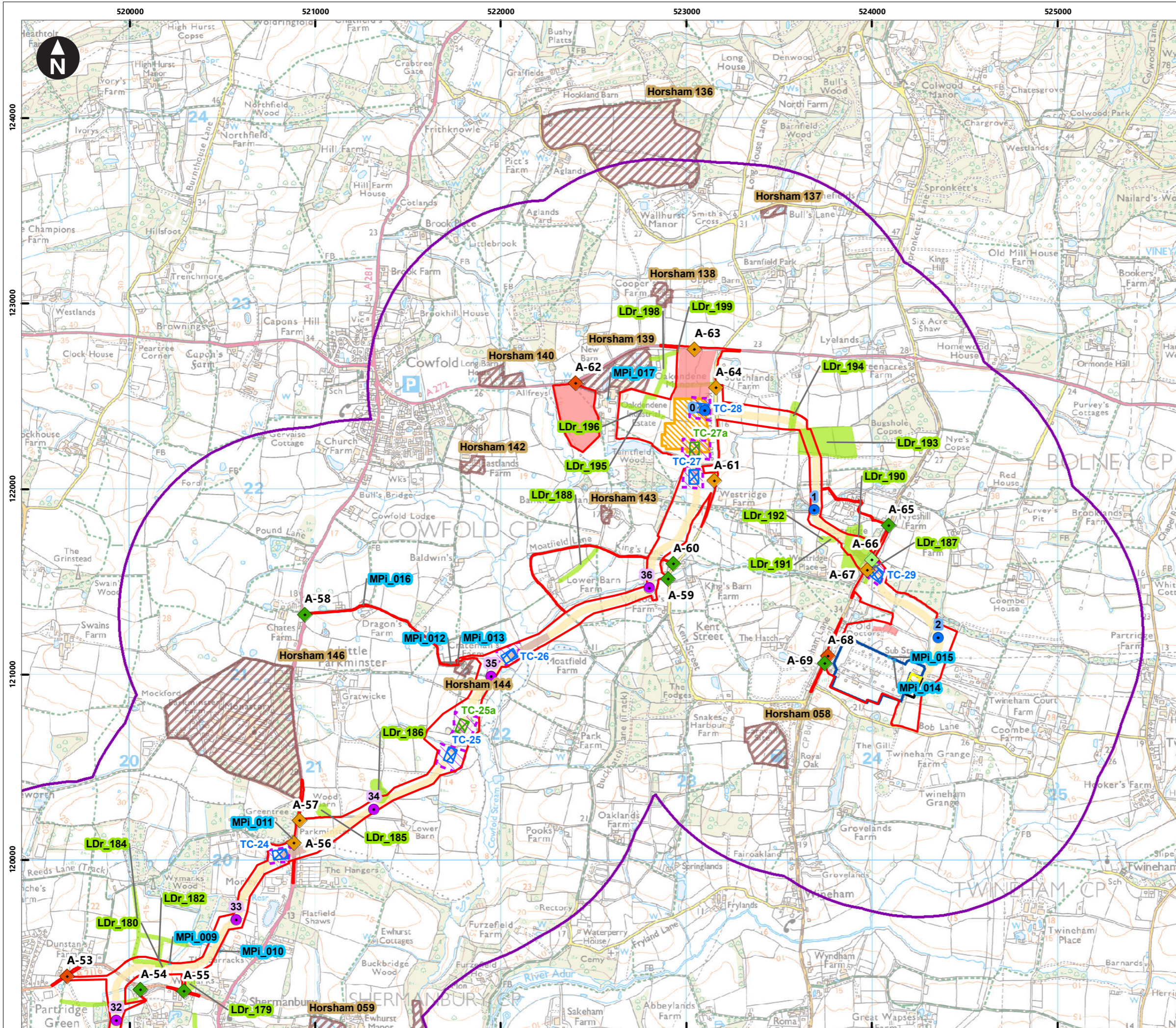
Rampion Extension Development

Rampion 2 Offshore Wind Farm

Figure 25.4g Archaeological Notification Areas and features identified by remote sensing (LiDAR and aerial photographs) and historic maps

Environmental Statement

System Identifier: 42285-WSP-ES-ON-FG-OH-3329		Version: 1.0
Company: WSP	Drawn By: SHEPS	Chk/Prvrd: SUTET
Drawn Date: 01/08/2023	Status: Final	



Service Layer Credits: Contains OS data © Crown Copyright and database right 2023  
 © Crown copyright and database rights 2023 Ordnance Survey 0100031673

**Key**

- Proposed DCO Order Limits
- 1km study area
- Bolney Substation extension (AIS)
- Bolney Substation extension (GIS)
- Existing National Grid Substation
- Oakendene substation site
- Trenchless Crossing (TC) compounds
- Trenchless Crossing (TC) compound alternatives
- Trenchless Crossing (TC) limits of deviation
- Temporary construction compound

**Proposed onshore cable construction corridor**

- Indicative trenchless section
- Indicative open cut section

**Onshore cable route KM points**

- Onshore Substation connection
- Onshore cable route

**Access from public highway**

- Construction
- Construction & operational
- Light construction & operational
- Operational

Archaeological Notification Areas

Historic map feature

LIDAR feature

0 0.1 0.2 0.4 0.6 0.8  
 Kilometres  
 1:20,000  
 British National Grid Transverse Mercator

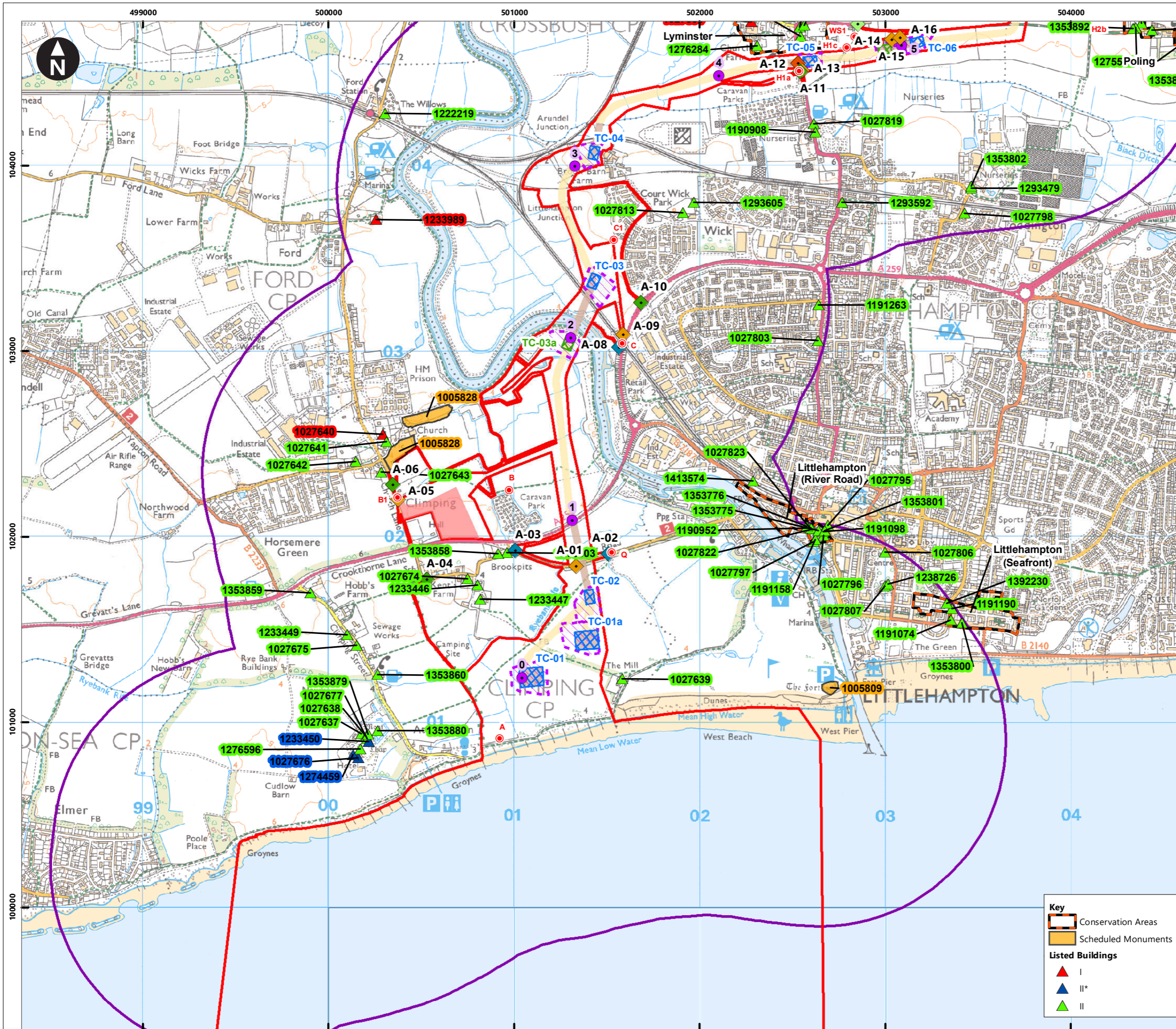
Rampion Extension Development

Rampion 2 Offshore Wind Farm

Figure 25.4h Archaeological Notification Areas and features identified by remote sensing (LiDAR and aerial photographs) and historic maps

Environmental Statement

System Identifier: 42285-WSP-ES-ON-FG-OH-3329		Version: 1.0
Company: WSP	Drawn By: SHEPS	Chk/Prvrd: SUTET
Drawn Date: 01/08/2023	Status: Final	



Service Layer Credits: Contains OS data © Crown Copyright and database right 2023  
 © Crown copyright and database rights 2023 Ordnance Survey 0100031673

**Key**

- Proposed DCO Order Limits
- 1km study area
- Trenchless Crossing (TC) compounds
- Trenchless Crossing (TC) compound alternatives
- Trenchless Crossing (TC) limits of deviation
- Temporary construction compound

**Proposed onshore cable construction corridor**

- Indicative trenchless section
- Indicative open cut section

**Onshore cable route KM points**

- Onshore cable route

**Access from public highway**

- Construction
- Construction & operational
- Light construction
- Light construction & operational
- Operational
- Viewpoints

**Key**

- Conservation Areas
- Scheduled Monuments

**Listed Buildings**

- I
- II\*
- II

Scale: 0 0.1 0.2 0.4 0.6 0.8 Kilometres  
 1:20,000  
 British National Grid Transverse Mercator

Rampion Extension Development

**Rampion 2 WIND FARM**

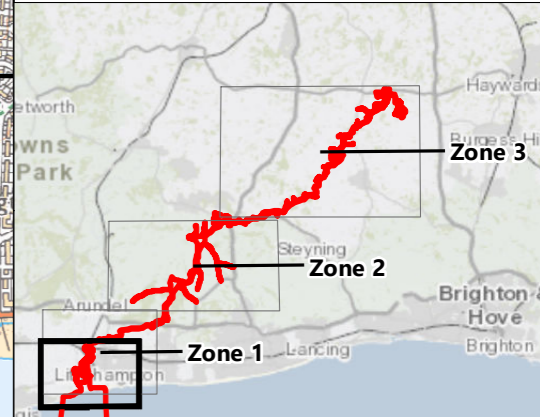
Rampion 2 Offshore Wind Farm

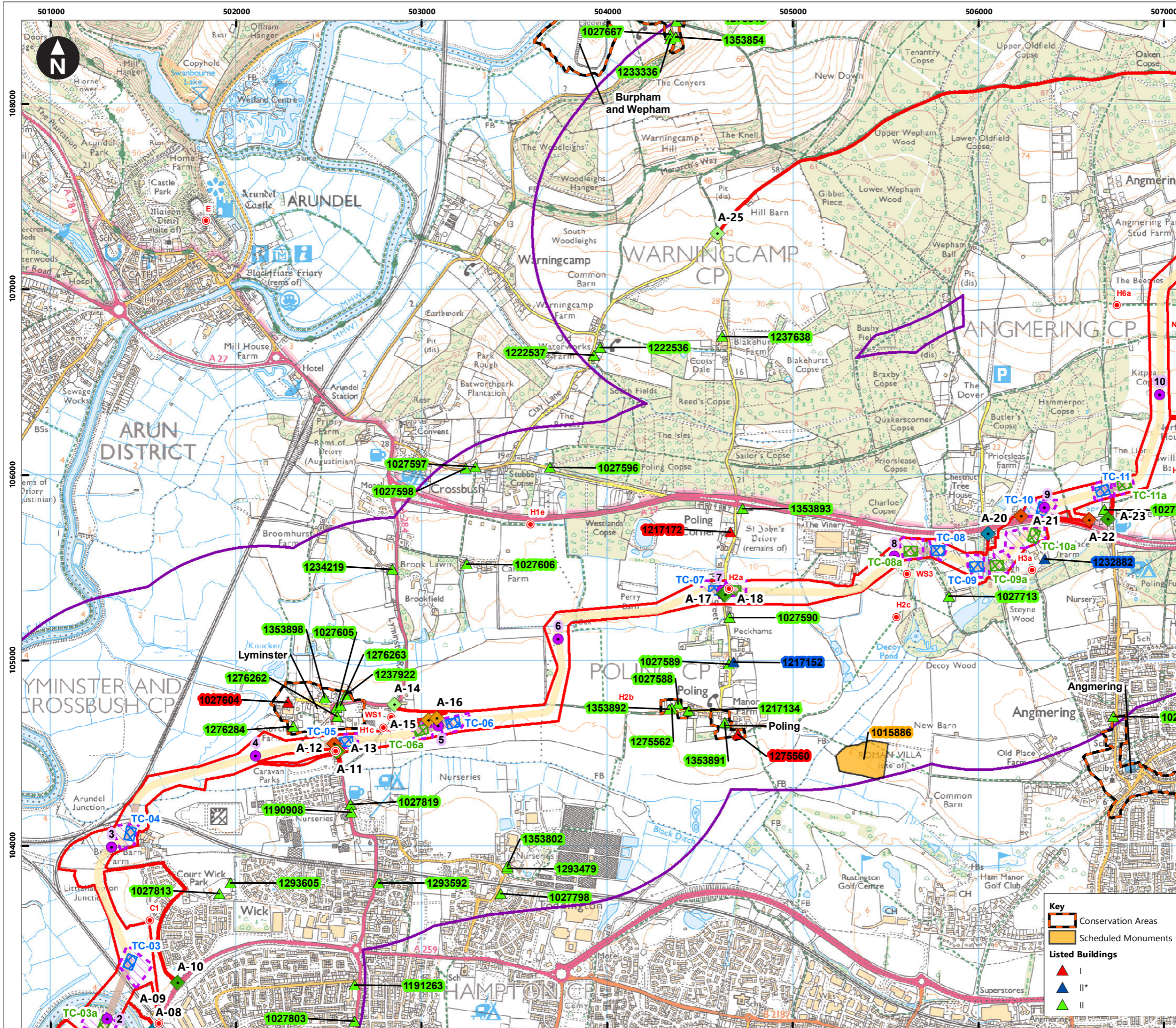
Figure 25.5a Designated heritage assets assessed for effects through change to setting from onshore development

Environmental Statement

System Identifier: 42285-WSP-ES-ON-FG-OH-3949 Version: 1.0

Company: WSP Drawn By: SHEPS Chk/Prvrd: ASTBD Drawn Date: 02/08/2023 Status: Final





Service Layer Credits: Contains OS data © Crown Copyright and database right 2023  
 © Crown copyright and database rights 2023 Ordnance Survey 0100031673

**Key**

- Proposed DCO Order Limits
- 1km study area
- Trenchless Crossing (TC) compounds
- Trenchless Crossing (TC) compound alternatives
- Trenchless Crossing (TC) limits of deviation

**Proposed onshore cable construction corridor**

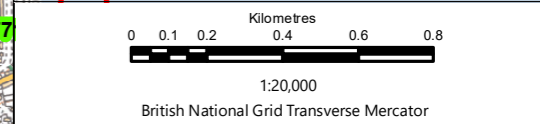
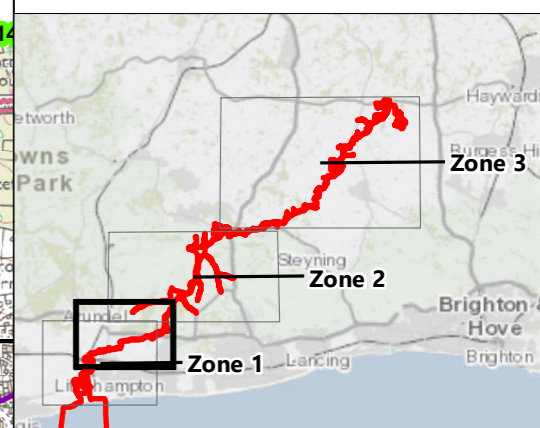
- Indicative trenchless section
- Indicative open cut section

**Onshore cable route KM points**

- Onshore cable route

**Access from public highway**

- ◆ Construction
- ◆ Construction & operational
- ◆ Light construction
- ◆ Light construction & operational
- ◆ Operational
- Viewpoints



Rampion Extension Development

Rampion 2 Offshore Wind Farm

Figure 25.5b Designated heritage assets assessed for effects through change to setting from onshore development

Environmental Statement

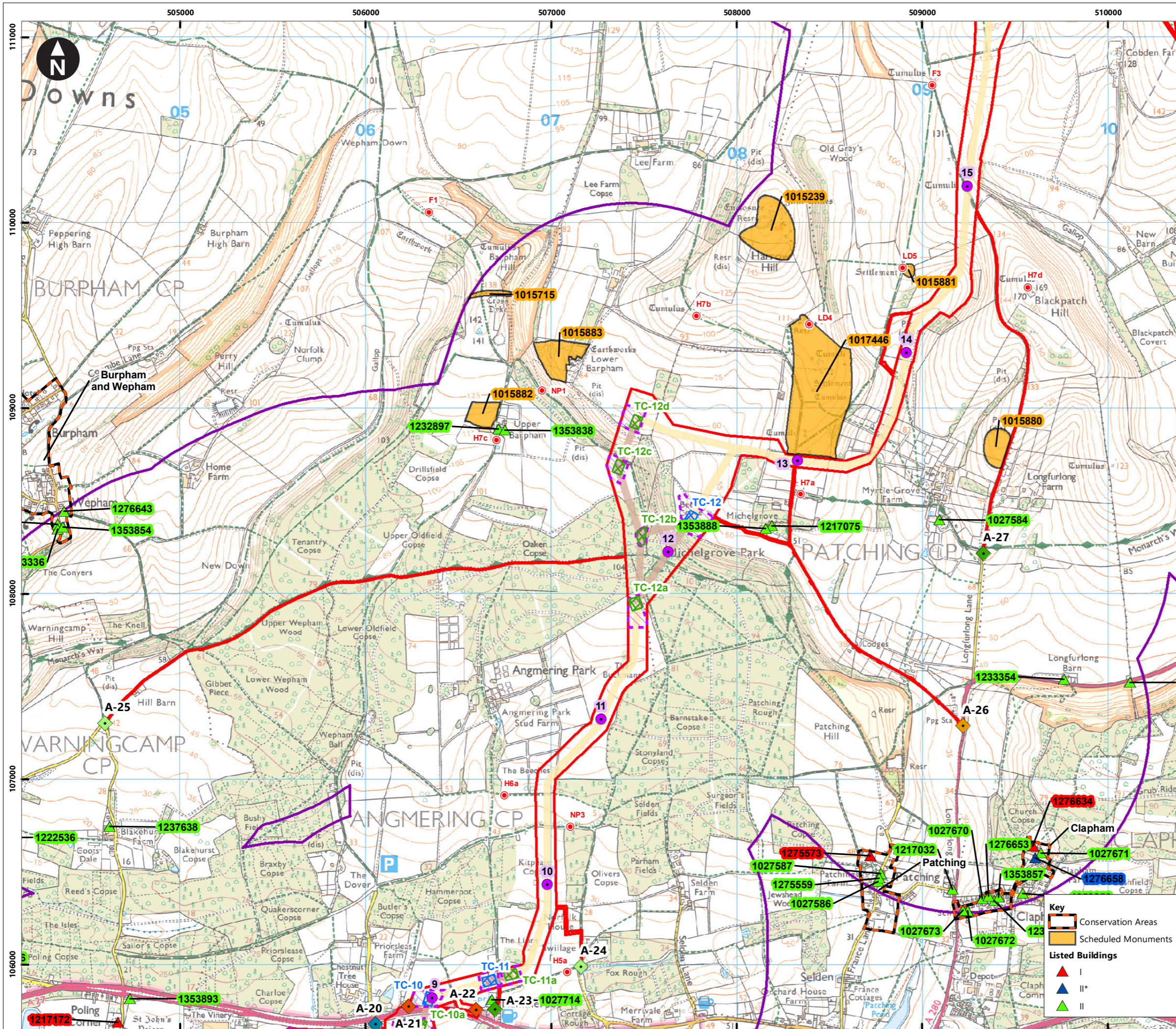
**Key**

- Conservation Areas
- Scheduled Monuments

**Listed Buildings**

- ▲ I
- ▲ II\*
- ▲ II

System Identifier:		Version:	
42285-WSP-ES-ON-FG-OH-3949		1.0	
Company:	Drawn By:	Chk/Prvrd:	Drawn Date:
WSP	SHEPS	ASTBD	02/08/2023
Status:	Final		



Service Layer Credits: Contains OS data © Crown Copyright and database right 2023  
 © Crown copyright and database rights 2023 Ordnance Survey 0100031673

**Key**

- Proposed DCO Order Limits
- 1km study area
- Trenchless Crossing (TC) compounds
- Trenchless Crossing (TC) compound alternatives
- Trenchless Crossing (TC) limits of deviation

**Proposed onshore cable construction corridor**

- Indicative trenchless section
- Indicative open cut section

**Onshore cable route KM points**

- Onshore cable route

**Access from public highway**

- Construction
- Construction & operational
- Light construction
- Light construction & operational
- Operational
- Viewpoints

**Key**

- Conservation Areas
- Scheduled Monuments

**Listed Buildings**

- I
- II\*
- II

Rampion Extension Development

**Rampion 2 WIND FARM**

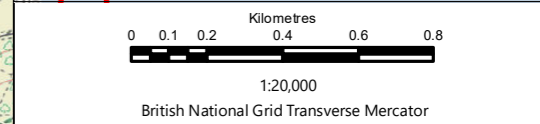
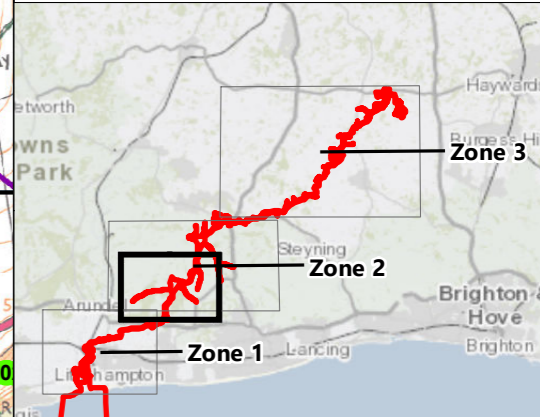
Rampion 2 Offshore Wind Farm

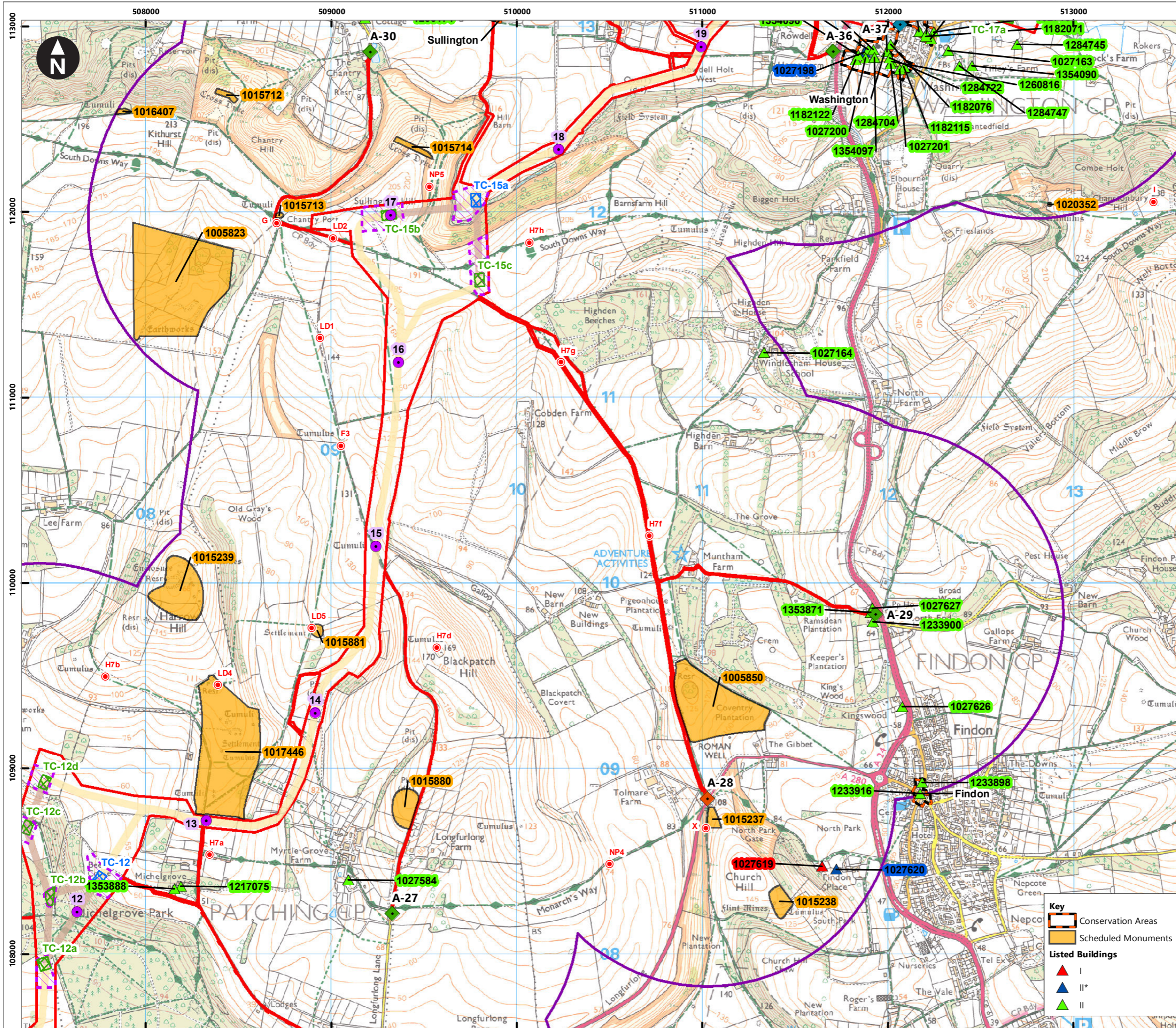
Figure 25.5c Designated heritage assets assessed for effects through change to setting from onshore development

Environmental Statement

System Identifier: 42285-WSP-ES-ON-FG-OH-3949      Version: 1.0

Company: WSP      Drawn By: SHEPS      Chk/Prvrd: ASTBD      Drawn Date: 02/08/2023      Status: Final





Service Layer Credits: Contains OS data © Crown Copyright and database right 2023  
 © Crown copyright and database rights 2023 Ordnance Survey 0100031673

**Key**

- Proposed DCO Order Limits
- 1km study area
- Trenchless Crossing (TC) compounds
- Trenchless Crossing (TC) compound alternatives
- Trenchless Crossing (TC) limits of deviation

**Proposed onshore cable construction corridor**

- Indicative trenchless section
- Indicative open cut section

**Onshore cable route KM points**

- Onshore cable route

**Access from public highway**

- Construction
- Construction & operational
- Light construction
- Operational
- Viewpoints

**Key**

- Conservation Areas
- Scheduled Monuments

**Listed Buildings**

- I
- II\*
- II

Rampion Extension Development

**Rampion 2 WIND FARM**

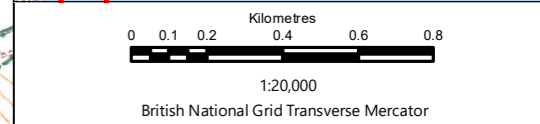
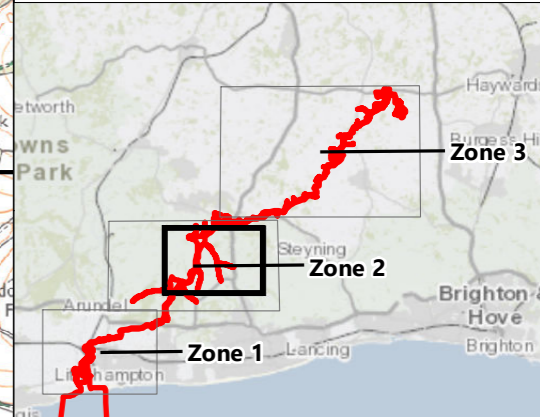
Rampion 2 Offshore Wind Farm

Figure 25.5d Designated heritage assets assessed for effects through change to setting from onshore development

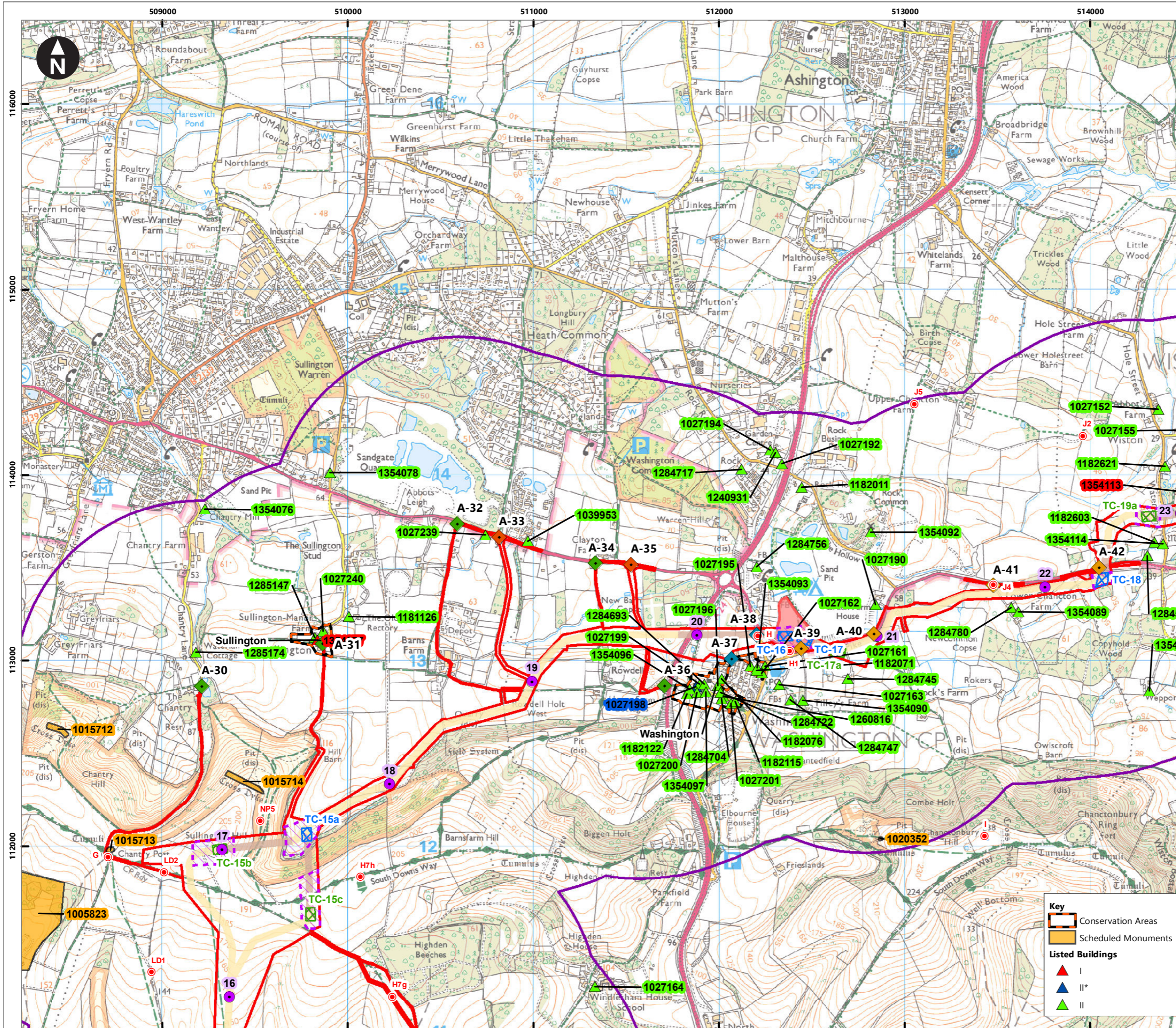
Environmental Statement

System Identifier: 42285-WSP-ES-ON-FG-OH-3949      Version: 1.0

Company: WSP      Drawn By: SHEPS      Chk/Prvrd: ASTBD      Drawn Date: 02/08/2023      Status: Final







Service Layer Credits: Contains OS data © Crown Copyright and database right 2023  
 © Crown copyright and database rights 2023 Ordnance Survey 0100031673

**Key**

- Proposed DCO Order Limits
- 1km study area
- Trenchless Crossing (TC) compounds
- Trenchless Crossing (TC) compound alternatives
- Trenchless Crossing (TC) limits of deviation
- Temporary construction compound

**Proposed onshore cable construction corridor**

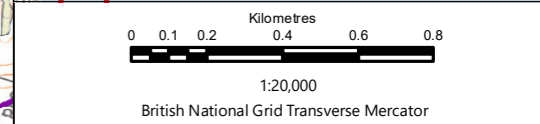
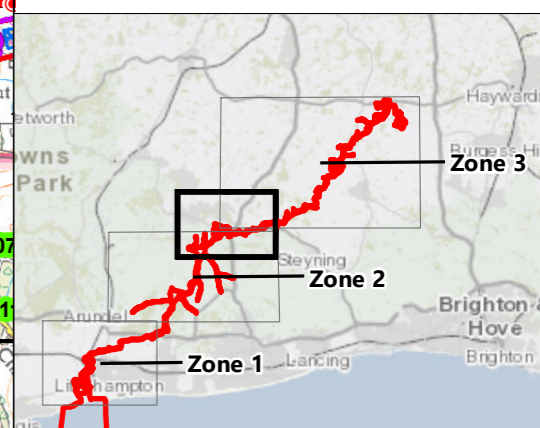
- Indicative trenchless section
- Indicative open cut section

**Onshore cable route KM points**

- Onshore cable route

**Access from public highway**

- ◆ Construction
- ◆ Construction & operational
- ◆ Light construction
- ◆ Operational
- Viewpoints



Rampion Extension Development

Rampion 2 Offshore Wind Farm

Figure 25.5e Designated heritage assets assessed for effects through change to setting from onshore development

Environmental Statement

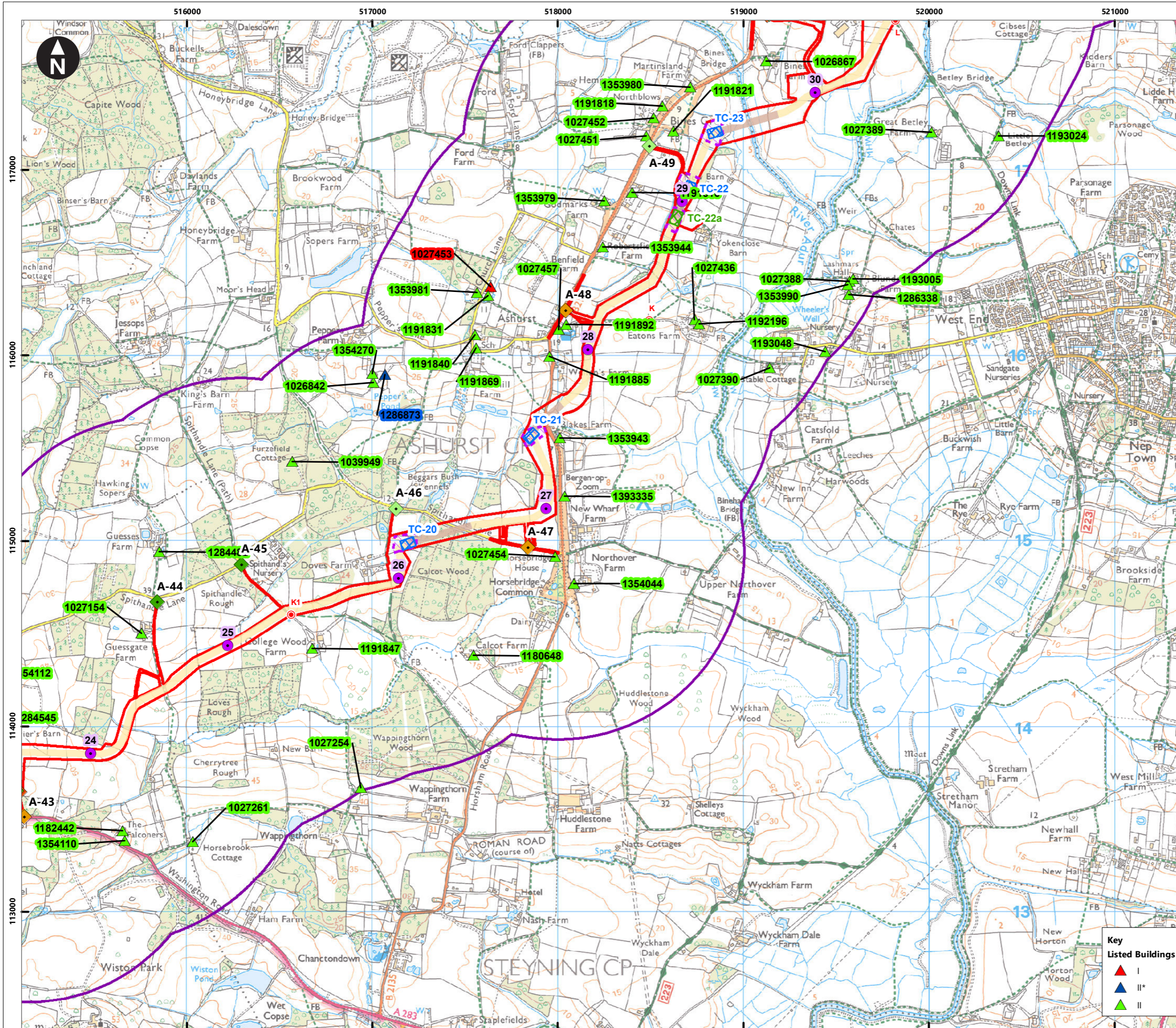
**Key**

- Conservation Areas
- Scheduled Monuments

**Listed Buildings**

- ▲ I
- ▲ II\*
- ▲ II

System Identifier:		Version:	
42285-WSP-ES-ON-FG-OH-3949		1.0	
Company:	Drawn By:	Chk/Prvrd:	Drawn Date:
WSP	SHEPS	ASTBD	02/08/2023
Status:		Final	



Service Layer Credits: Contains OS data © Crown Copyright and database right 2023  
 © Crown copyright and database rights 2023 Ordnance Survey 0100031673

**Key**

- Proposed DCO Order Limits
- 1km study area
- Trenchless Crossing (TC) compounds
- Trenchless Crossing (TC) compound alternatives
- Trenchless Crossing (TC) limits of deviation

**Proposed onshore cable construction corridor**

- Indicative trenchless section
- Indicative open cut section

**Onshore cable route KM points**

- Onshore cable route

**Access from public highway**

- Construction
- Construction & operational
- Light construction & operational
- Operational
- Viewpoints

**Key Listed Buildings**

- I
- II\*
- II

**Zone 1**  
**Zone 2**  
**Zone 3**

0 0.1 0.2 0.4 0.6 0.8  
 Kilometres  
 1:20,000  
 British National Grid Transverse Mercator

Rampion Extension Development

**Rampion 2 WIND FARM**

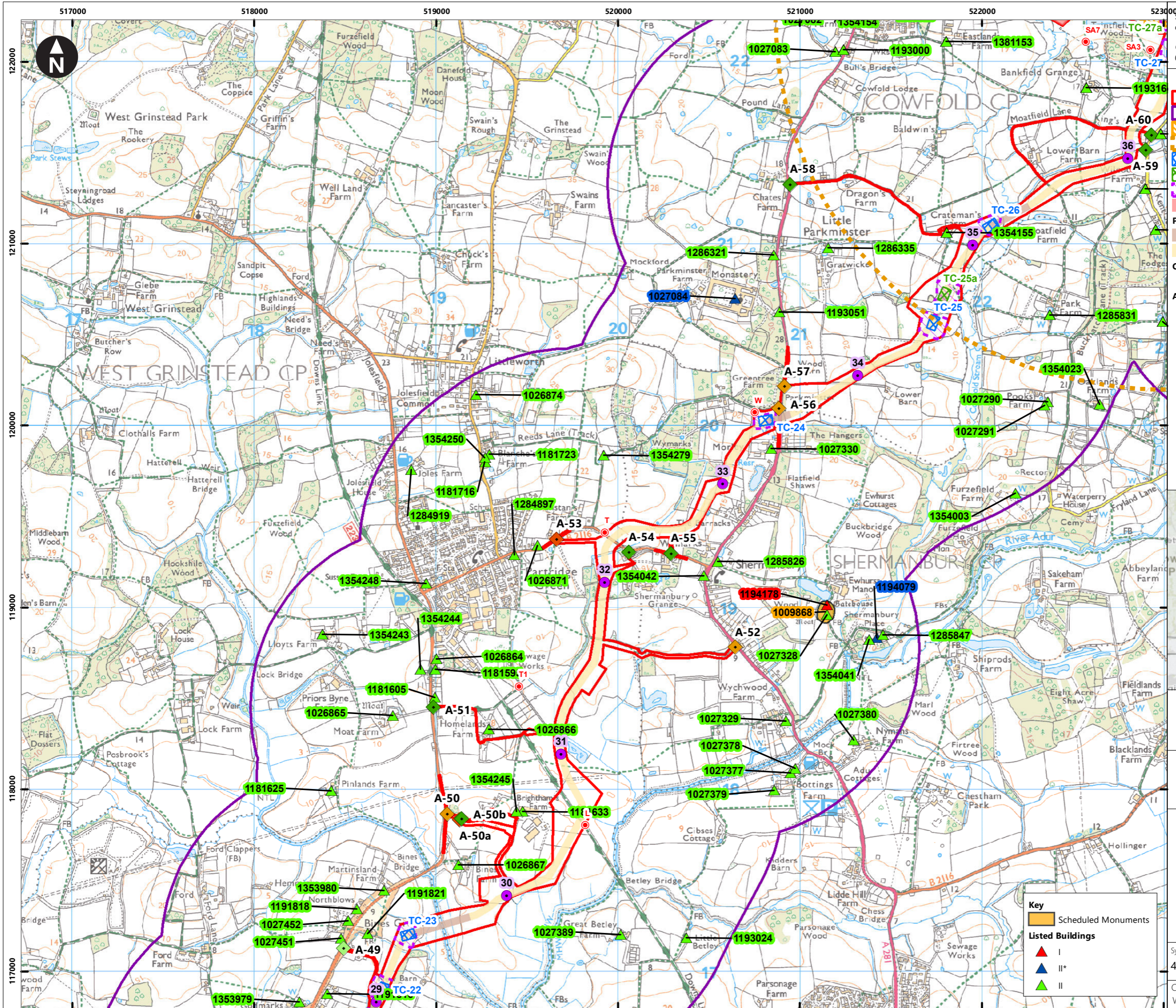
Rampion 2 Offshore Wind Farm

Figure 25.5f Designated heritage assets assessed for effects through change to setting from onshore development

Environmental Statement

System Identifier: 42285-WSP-ES-ON-FG-OH-3949  
 Version: 1.0

Company: WSP  
 Drawn By: SHEPS  
 Chk/Prvrd: ASTBD  
 Drawn Date: 02/08/2023  
 Status: Final



Service Layer Credits: Contains OS data © Crown Copyright and database right 2023  
 © Crown copyright and database rights 2023 Ordnance Survey 0100031673

**Key**

- Proposed DCO Order Limits
- 1km study area
- Oakdene substation site
- 2km Oakdene substation buffer
- Trenchless Crossing (TC) compounds
- Trenchless Crossing (TC) compound alternatives
- Trenchless Crossing (TC) limits of deviation
- Temporary construction compound

**Proposed onshore cable construction corridor**

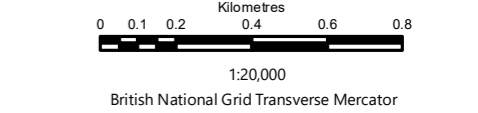
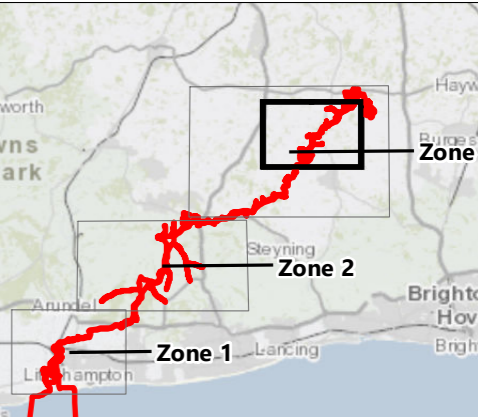
- Indicative trenchless section
- Indicative open cut section

**Onshore cable route KM points**

- Onshore cable route

**Access from public highway**

- ◆ Construction
- ◇ Construction & operational
- ◆ Light construction & operational
- ◇ Operational
- Viewpoints



Rampion Extension Development

Rampion 2 Offshore Wind Farm

Figure 25.5g Designated heritage assets assessed for effects through change to setting from onshore development

Environmental Statement

System Identifier: 42285-WSP-ES-ON-FG-OH-3949      Version: 1.0

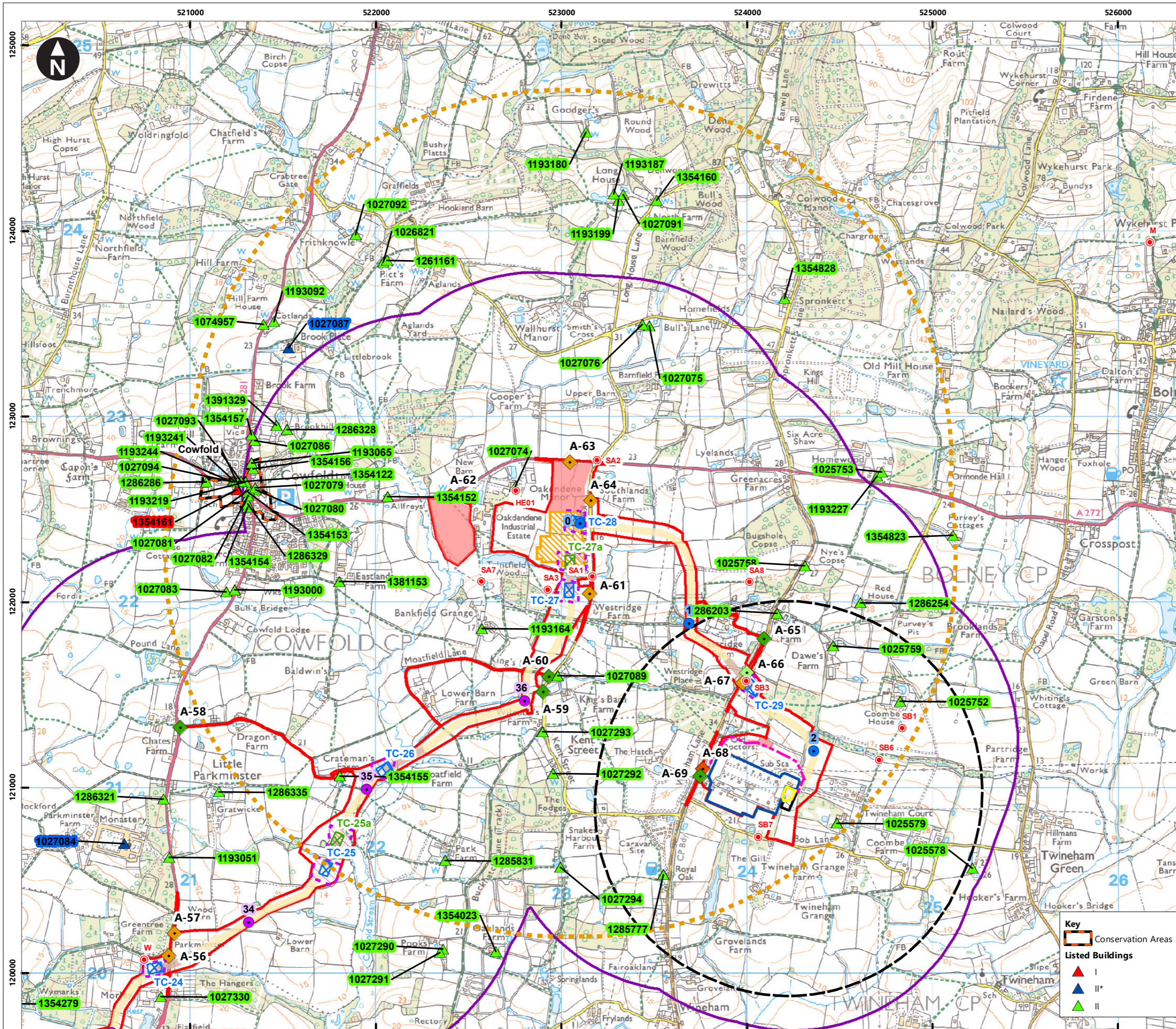
Company: WSP	Drawn By: SHEPS	Chk/Prvrd: ASTBD	Drawn Date: 02/08/2023	Status: Final
--------------	-----------------	------------------	------------------------	---------------

**Key**

- Scheduled Monuments

**Listed Buildings**

- ▲ I
- ▲ II\*
- ▲ II



Service Layer Credits: Contains OS data © Crown Copyright and database right 2023  
 © Crown copyright and database rights 2023 Ordnance Survey 0100031673

**Key**

- Proposed DCO Order Limits
- 1km study area
- Bolney Substation extension (AIS)
- Bolney Substation extension (GIS)
- 1km Bolney AIS buffer
- Existing National Grid Substation
- Construction access
- Oakdene substation site
- 2km Oakdene substation buffer
- Trenchless Crossing (TC) compounds
- Trenchless Crossing (TC) compound alternatives
- Trenchless Crossing (TC) limits of deviation
- Temporary construction compound

**Proposed onshore cable construction corridor**

- Indicative trenchless section
- Indicative open cut section

**Onshore cable route KM points**

- Onshore Substation connection
- Onshore cable route

**Access from public highway**

- Construction
- Construction & operational
- Light construction & operational
- Operational
- Viewpoints

**Key**

- Conservation Areas
- Listed Buildings
- I
- II\*
- II

**Rampion Extension Development**

**Rampion 2 Offshore Wind Farm**

Figure 25.5h Designated heritage assets assessed for effects through change to setting from onshore development

Environmental Statement

System Identifier: 42285-WSP-ES-ON-FG-OH-3949  
 Version: 1.0

Company: WSP  
 Drawn By: SHEPS  
 Chk/Prvrd: ASTBD  
 Drawn Date: 02/08/2023  
 Status: Final

Scale: 1:20,000  
 British National Grid Transverse Mercator

Inset map showing the project location relative to Zone 1, Zone 2, and Zone 3.